



## Buncombe County Employers (200+ Employees)

### Company

#### 3,000+ Employees

Buncombe County Public Schools  
Mission Health System and Hospital

#### 1,000–2,999 Employees

City of Asheville  
The Biltmore Company  
Buncombe County Government  
The Omni Grove Park Inn  
Ingles Markets, Inc. (Home Office Buncombe County)  
Asheville Buncombe Community College (AB-Tech)  
VA Medical Center - Asheville Department of Veterans Affairs

#### 750–999 Employees

CarePartners  
Eaton Corporation - Electrical Division  
YMCA of Western North Carolina

#### 500–749 Employees

Asheville City Schools  
BorgWarner Turbo Systems  
Guthy Renker Fulfillment Services, LLC  
MAHEC (Mountain Area Health Education Center)  
MB Haynes Corp. (Division Offices)  
Sitel, A Subsidiary of Onex Corp.  
Thermo Fisher Scientific, Inc.  
University of North Carolina Asheville

#### 400–499 Employees

Black Mountain Neuro-Medical Treatment Center  
Kearfott Corporation  
Wal-Mart Stores, Inc. Supercenter Store #1317

#### 300–399 Employees

Deerfield Episcopal Retirement Community  
Duke Energy  
Flint Group  
Genova Diagnostics  
Givens Estates United Methodist Retirement Community  
HomeTrust Bank

### NAICS 3-Digit Description

Educational Services  
Hospitals

Executive, Legislative & Other General Government Support  
Museums, Historical Sites & Similar Institutions  
Executive, Legislative & Other General Government Support  
Accommodation  
Food & Beverage Stores  
Educational Services  
Hospitals

Nursing & Residential Care Facilities  
Electrical Equip., Appliance & Component Mfg.  
Religious, Grantmaking, Civic, Professional & Similar Org.

Educational Services  
Transportation Equip. Mfg.  
Administrative & Support Services  
Ambulatory Health Care Services  
Construction of Buildings  
Administrative & Support Services  
Machinery Mfg.  
Educational Services

Nursing & Residential Care Facilities  
Transportation Equipment Manufacturing  
General Merchandise Stores

Nursing & Residential Care Facilities  
Utilities  
Machinery Mfg.  
Ambulatory Health Care Services  
Nursing & Residential Care Facilities  
Credit Intermediation & Related Activities

More Research Reports at: [EconomicDevelopmentAsheville.org](http://EconomicDevelopmentAsheville.org) ■ [AshevilleChamber.org](http://AshevilleChamber.org)





### Company

McDonald's Corp., Corporate Office  
 Nypro Asheville  
 Plasticard-Locktech International  
 GE Aviation  
 Taylor & Murphy Construction Company, Inc.

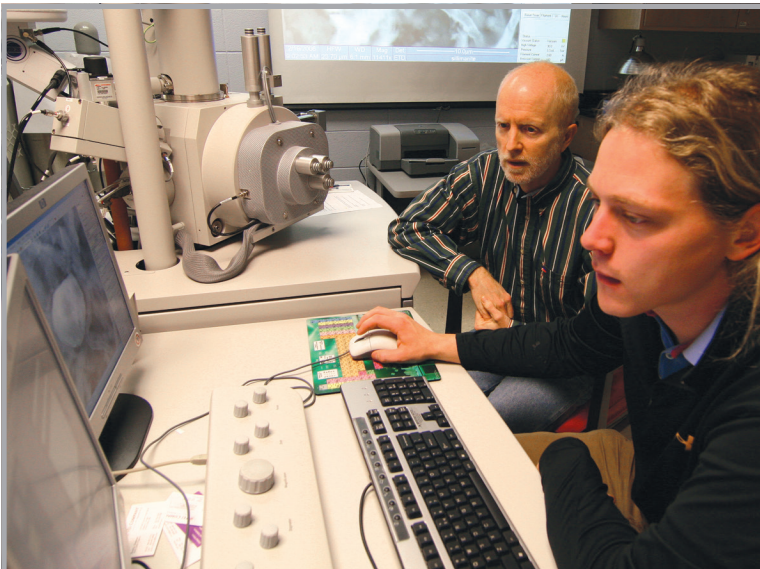
### 200-299 Employees

Advantage Care Services  
 AT&T North Carolina  
 Biltmore Estate Winery  
 Blue Ridge Area Foundation/Blue Ridge Group Homes  
 Colbond, Inc.  
 Eaton Corporation - Electrical Division (Avery's Creek)  
 Eliada Homes, Inc. DBA Eliada  
 Givens Highland Farms  
 Inn on Biltmore Estate  
 J & S Cafeteria (Buncombe County)  
 J. Crew Group  
 Milkco, Inc.  
 NC State Alcohol & Drug Abuse Treatment Ctr. (Julian F. Keith)  
 Pisgah Valley Retirement Community  
 Sam's Club Store #6452 (A Division of Wal-Mart Stores, Inc.)  
 Southern Concrete Materials, Inc.  
 TE Connectivity (Fairview, NC)  
 United Parcel Service (Asheville)  
 United States Postal Service - Asheville Facility  
 Warren Wilson College  
 Whole Foods Market  
 Wicked Weed Brewing

### NAICS 3-Digit Description

Food Services & Drinking Places  
 Plastics & Rubber Products Mfg.  
 Plastics & Rubber Products Mfg.  
 Transportation Equip. Mfg.  
 Heavy & Civil Engineering Construction

Ambulatory Health Care Services  
 Telecommunications  
 Beverage & Tobacco Product Mfg.  
 Nursing & Residential Care Facilities  
 Chemical Mfg.  
 Electrical Equip., Appliance & Component Mfg.  
 Nursing & Residential Care Facilities  
 Nursing & Residential Care Facilities  
 Accommodation  
 Food Services & Drinking Places  
 Clothing & Clothing Accessories Stores  
 Food Mfg.  
 Hospitals  
 Nursing & Residential Care Facilities  
 General Merchandise Stores  
 Nonmetallic Mineral Product Mfg.  
 Electrical Equip., Appliance & Component Mfg.  
 Couriers & Messengers  
 Postal Service  
 Educational Services  
 Food & Beverage Stores  
 Beverage & Tobacco Product Mfg.



*“Key factors in our decision to make additional investments in North Carolina included our past success in manufacturing world-class products at the facility, the talented workforce we have been able to attract over the years, and the support from the State of North Carolina and Buncombe County in providing resources that enable us to further strengthen our workforce by expanding training and skill development.”*

— Thomas Loewald  
 Thermo Fisher's Laboratory Equipment

Updated: October 2016