



Buncombe County Employers (200+ Employees)

Company

3,000+ Employees

Buncombe County Public Schools
Mission Health System and Hospital

1,000–2,999 Employees

City of Asheville
The Biltmore Company
Buncombe County Government
The Omni Grove Park Inn
Ingles Markets, Inc. (Home Office Buncombe County)
Asheville Buncombe Community College (AB-Tech)
VA Medical Center - Asheville Department of Veterans Affairs

750–999 Employees

CarePartners
Eaton Corporation - Electrical Division
YMCA of Western North Carolina

500–749 Employees

Asheville City Schools
BorgWarner Turbo Systems
Guthy Renker Fulfillment Services, LLC
MAHEC (Mountain Area Health Education Center)
MB Haynes Corp. (Division Offices)
Sitel, A Subsidiary of Onex Corp.
Thermo Fisher Scientific, Inc.
University of North Carolina Asheville

400–499 Employees

Black Mountain Neuro-Medical Treatment Center
Kearfott Corporation
Wal-Mart Stores, Inc. Supercenter Store #1317

300–399 Employees

Deerfield Episcopal Retirement Community
Duke Energy
Flint Group
Genova Diagnostics
Givens Estates United Methodist Retirement Community
HomeTrust Bank

NAICS 3-Digit Description

Educational Services
Hospitals

Executive, Legislative & Other General Government Support
Museums, Historical Sites & Similar Institutions
Executive, Legislative & Other General Government Support
Accommodation
Food & Beverage Stores
Educational Services
Hospitals

Nursing & Residential Care Facilities
Electrical Equip., Appliance & Component Mfg.
Religious, Grantmaking, Civic, Professional & Similar Org.

Educational Services
Transportation Equip. Mfg.
Administrative & Support Services
Ambulatory Health Care Services
Construction of Buildings
Administrative & Support Services
Machinery Mfg.
Educational Services

Nursing & Residential Care Facilities
Transportation Equipment Manufacturing
General Merchandise Stores

Nursing & Residential Care Facilities
Utilities
Machinery Mfg.
Ambulatory Health Care Services
Nursing & Residential Care Facilities
Credit Intermediation & Related Activities

More Research Reports at: EconomicDevelopmentAsheville.org ■ AshevilleChamber.org





Research and Reports

Major Employers



ECONOMIC DEVELOPMENT COALITION for Asheville-Buncombe County

Company

McDonald's Corp., Corporate Office
Nypro Asheville
Plasticard-Locktech International
GE Aviation
Taylor & Murphy Construction Company, Inc.

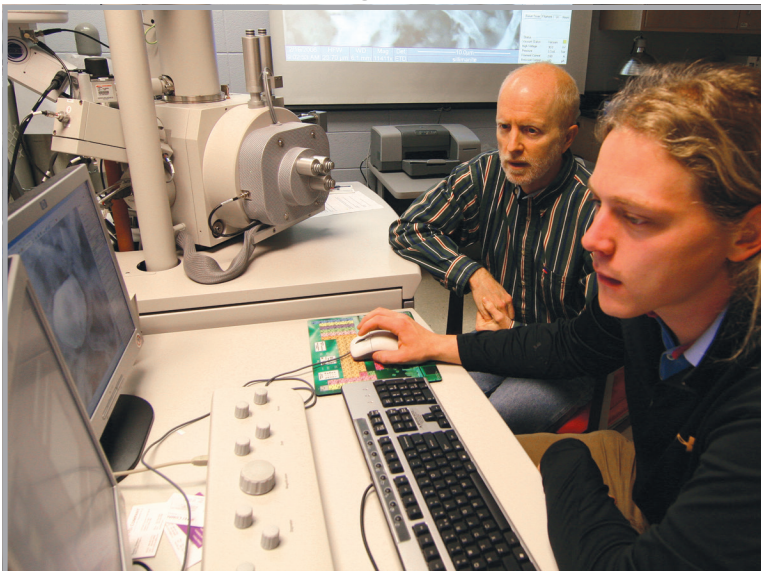
200-299 Employees

Advantage Care Services
AT&T North Carolina
Biltmore Estate Winery
Blue Ridge Area Foundation/Blue Ridge Group Homes
Colbond, Inc.
Eaton Corporation - Electrical Division (Avery's Creek)
Eliada Homes, Inc. DBA Eliada
Givens Highland Farms
Inn on Biltmore Estate
J & S Cafeteria (Buncombe County)
J. Crew Group
Milkco, Inc.
NC State Alcohol & Drug Abuse Treatment Ctr. (Julian F. Keith)
Pisgah Valley Retirement Community
Sam's Club Store #6452 (A Division of Wal-Mart Stores, Inc.)
Southern Concrete Materials, Inc.
TE Connectivity (Fairview, NC)
United Parcel Service (Asheville)
United States Postal Service - Asheville Facility
Warren Wilson College
Whole Foods Market
Wicked Weed Brewing

NAICS 3-Digit Description

Food Services & Drinking Places
Plastics & Rubber Products Mfg.
Plastics & Rubber Products Mfg.
Transportation Equip. Mfg.
Heavy & Civil Engineering Construction

Ambulatory Health Care Services
Telecommunications
Beverage & Tobacco Product Mfg.
Nursing & Residential Care Facilities
Chemical Mfg.
Electrical Equip., Appliance & Component Mfg.
Nursing & Residential Care Facilities
Nursing & Residential Care Facilities
Accommodation
Food Services & Drinking Places
Clothing & Clothing Accessories Stores
Food Mfg.
Hospitals
Nursing & Residential Care Facilities
General Merchandise Stores
Nonmetallic Mineral Product Mfg.
Electrical Equip., Appliance & Component Mfg.
Couriers & Messengers
Postal Service
Educational Services
Food & Beverage Stores
Beverage & Tobacco Product Mfg.



“Key factors in our decision to make additional investments in North Carolina included our past success in manufacturing world-class products at the facility, the talented workforce we have been able to attract over the years, and the support from the State of North Carolina and Buncombe County in providing resources that enable us to further strengthen our workforce by expanding training and skill development.”

— Thomas Loewald
Thermo Fisher's Laboratory Equipment

Updated: November 2017