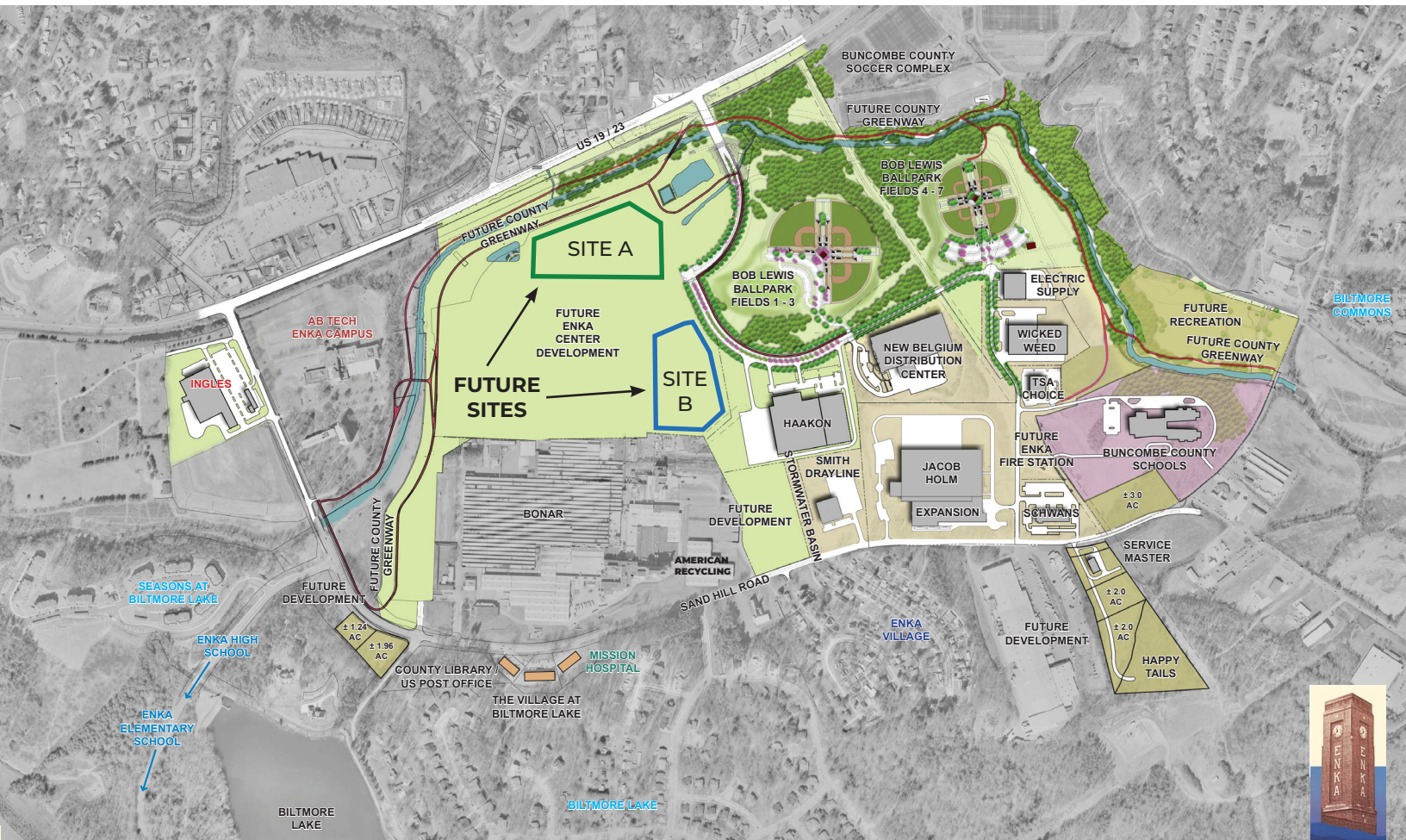




# ENKA COMMERCE PARK

ASHEVILLE, NORTH CAROLINA



- Build-to-suite opportunities, 50-150K SQ FT
- Zoned Employment
- All Utilities Available
- Will Subdivide
- Delivered at Rough Grade
- 3 Miles to US I-26 & 3 Miles to US I-40
- 11 Miles to Asheville Regional Airport
- Master Planned Industrial Park
- Established Infrastructure / Tenants
- Adjacent to New Belgium / Wicked Weed

## PLEASE CONTACT US

CLARK DUNCAN | Senior Vice President of Economic Development  
828.258.6134, [cduncan@ashevillechamber.org](mailto:cduncan@ashevillechamber.org)



Site Description: 5 to 25 graded acres in an established industrial park 10 miles southwest of Asheville, North Carolina. Located less than three miles from both I-26 and I-40 and 11 miles from the Asheville Regional Airport. Sites delivered rough-graded. Adjacent industry included New Belgium Brewing Distribution Center, Wicked Weed Brewery, Jacob Holms Industries, Colbond, Hagemyer Supply, etc. Master plan includes retail, sports complex and greenway amenities for the industrial park.

Location: Sand Hill Road, Candler NC 28715 (West Buncombe County)

Zoning: Employment with established industry adjacent

Use: Former Manufacturing

Water: City of Asheville – on site

Sewer: Metropolitan Sewerage District – on site

Gas: Dominion Energy – on site

Power: Duke Energy – on site

Fiber: Provider of choice – on site

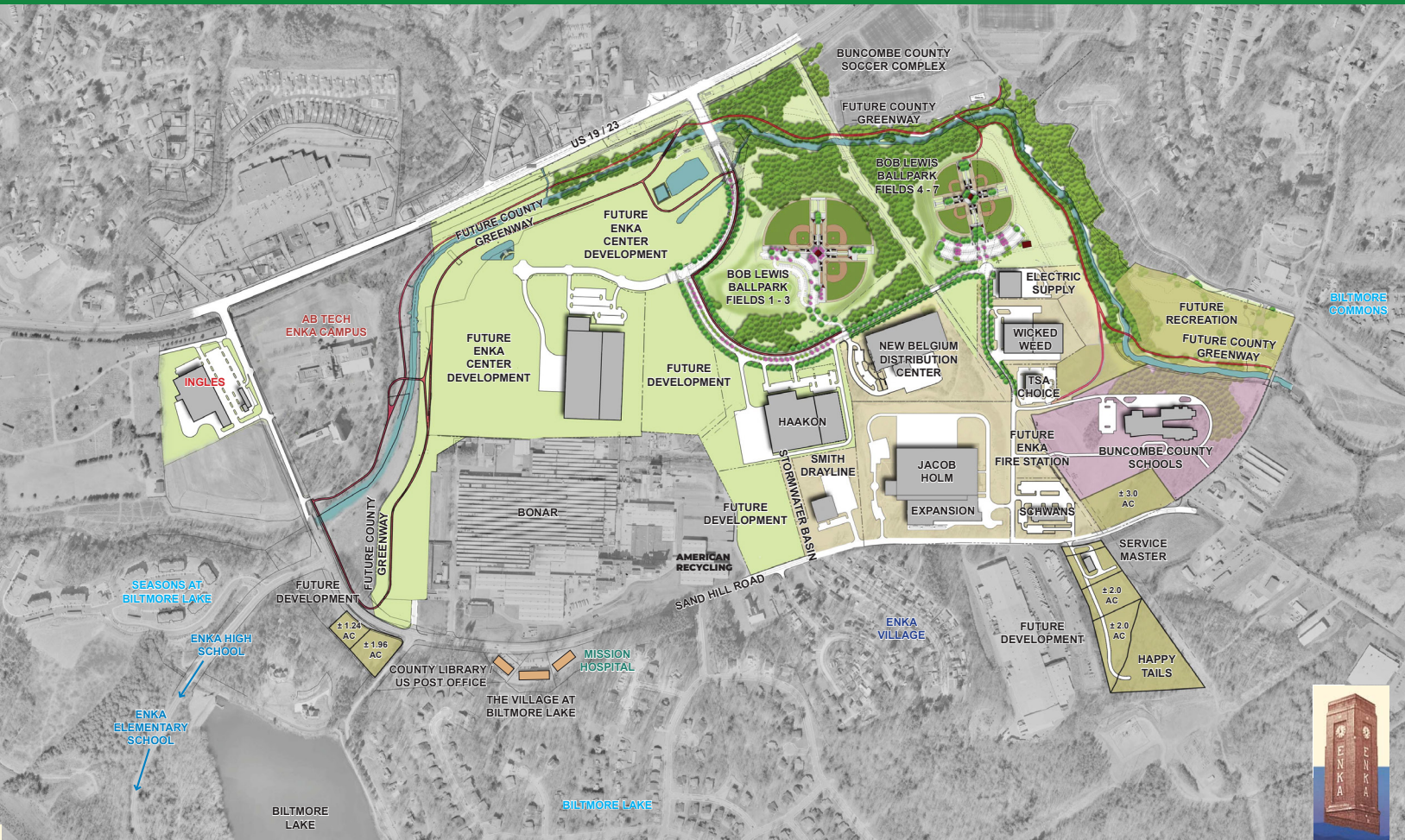
Available: Build-to-suite, lease back



**PLEASE CONTACT US**

**CLARK DUNCAN** | Senior Vice President of Economic Development  
828.258.6134, [cduncan@ashevillechamber.org](mailto:cduncan@ashevillechamber.org)





↑  
Picture above is a  
conceptual site plan  
showing a 200,000  
sq. ft. site layout.

Picture to the right  
showcases easy  
access to I-26 and  
I-40 →



**ECONOMIC  
DEVELOPMENT  
COALITION**

Asheville-Buncombe County

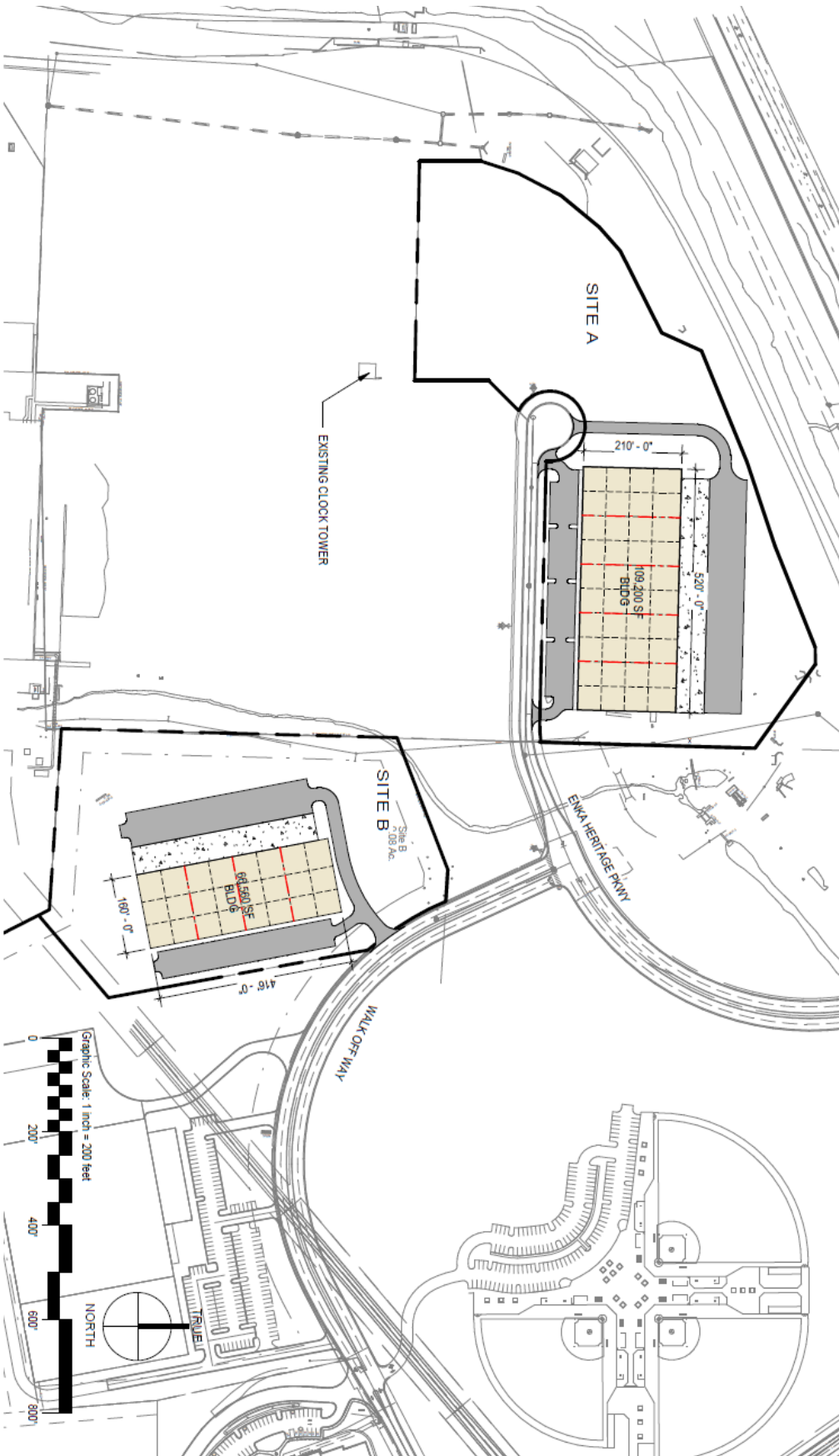
**PLEASE CONTACT US**

**CLARK DUNCAN** | Senior Vice President of Economic Development  
828.258.6134, [cduncan@ashevillechamber.org](mailto:cduncan@ashevillechamber.org)



**SITE A**  
**109,200 SQ FT**  
**BUILDING**

**SITE B**  
**66,560 SQ FT**  
**BUILDING**



**PLEASE CONTACT US**

**CLARK DUNCAN** | Senior Vice President of Economic Development  
828.258.6134, [cduncan@ashevillechamber.org](mailto:cduncan@ashevillechamber.org)