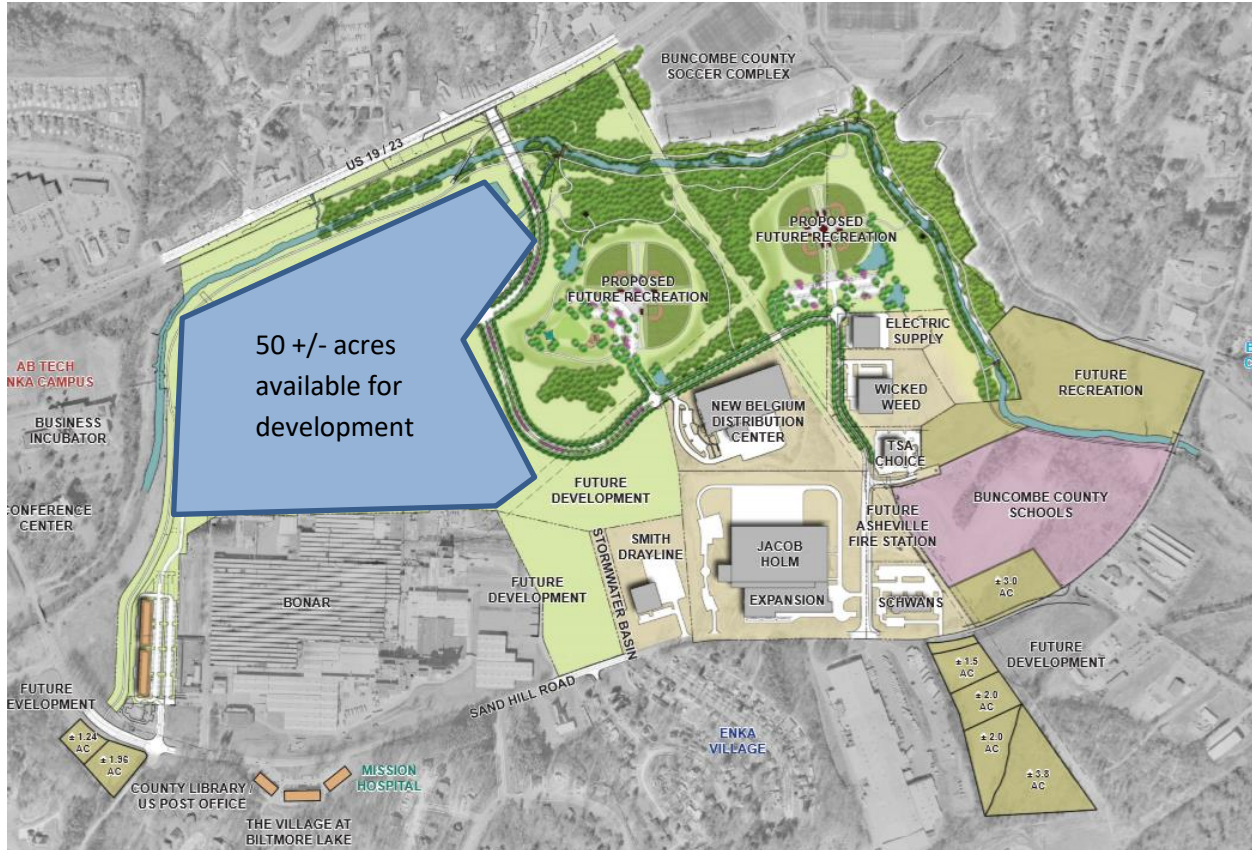




Enka Commerce Park

Asheville, North Carolina

EconomicDevelopmentAsheville.org



- 8-55 Acres
- Zoned Employment
- All Utilities Available
- Will Subdivide
- Delivered at Rough Grade
- 3 mi to US I-26 / 3 mi to US 1-40
- 11 mi to Asheville Regional Airport
- Master Planned Industrial Park
- Established Infrastructure / Tenants
- Adjacent to New Belgium / Wicked Weed

Clark S. Duncan, Director of Marketing & Business Development
Economic Development Coalition for Asheville – Buncombe County
cduncan@ashevillechamber.org | 828.258.6134 office

Site Description: 5-55 remaining acres of rolling terrain in South/West Asheville less than three miles from both I-26 and I-40 and 11 miles from the Asheville Regional Airport. Sites delivered rough-graded. Adjacent industry includes New Belgium Brewing Distribution Center, Wicked Weed Brewery, Jacob Holm Industries, Colbond, Hagemeyer Supply, etc. Master plan includes retail, sports complex and greenway amenities for the industrial park.

Location: Sand Hill Road, Candler NC 28715 (West Buncombe County)

Zoning: Employment with established industry adjacent

Use: Agricultural

Water: City of Asheville – on site

Sewer: Metropolitan Sewerage District – on site

Gas: PSNC Energy – on site

Power: Duke Energy – on site substation

Fiber: Provider of choice – on site

Pricing: \$175,000/ acre rough graded

Available: For Sale, will subdivide, CPE#483630/483592

