



BEAVERDAM INDUSTRIAL PARK

ASHEVILLE METRO AREA



- 10 Acre, NC Certified Site
- Graded and Shovel Ready
- Robust Utilities Site Adjacent
- Planned Industrial Park Use
- 2 Miles to I-40 via Access Road / Exit 33
- Established Industrial Uses
- 20 Miles to Downtown / 25 Miles to Airport
- County-Owned for Economic Development

PLEASE CONTACT US

CLARK DUNCAN | Senior Vice President of Economic Development
828.258.6134, cduncan@ashevillechamber.org

Site Description: 10 acre, graded site in established Beaverdam Industrial Park with adjacent water, sewer, power, and natural gas. Site is located in and owned by Haywood County; approximately 2 miles to US Interstate 40 and 20 miles to downtown Asheville. 25 miles to the Asheville Regional Airport. The site neighbors established tenants including Consolidated Metco (Automotive Injected Molded Plastics), custom manufacturer Carolina Conveying as well as a commercial uniform laundry. The site offers dramatic long range, easterly view shed of mountain ranges. Nearby recreational amenities include the North Carolina Arboretum and Pisgah National Forest.

Location: Great Oak Drive, Canton, NC 28716 (East Haywood County)

Zoning: Employment with established industry adjacent

Use: Former Manufacturing

Water: City of Asheville – on site

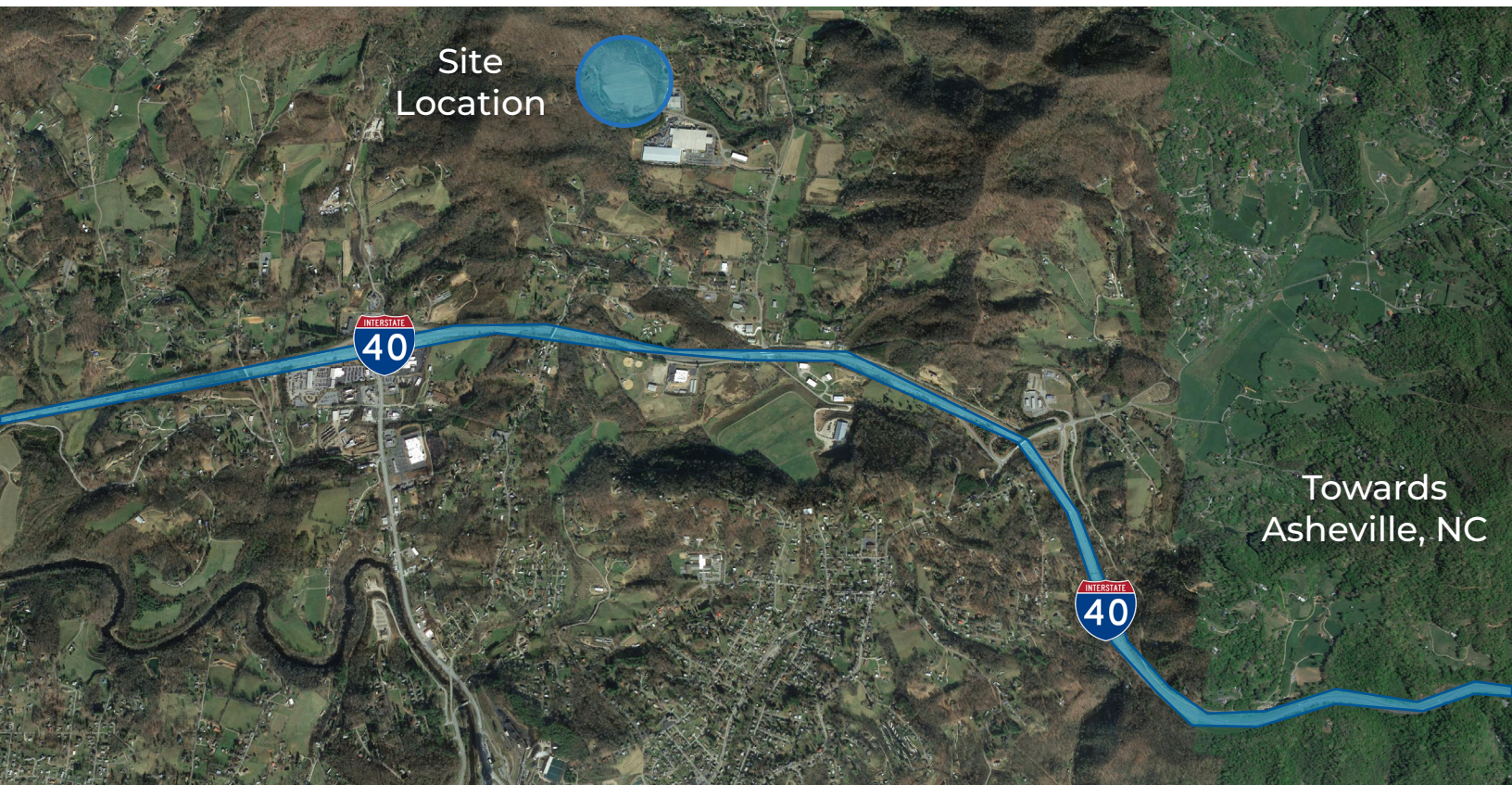
Sewer: Metropolitan Sewerage District – on site

Gas: Dominion Energy – on site

Power: Duke Energy – on site

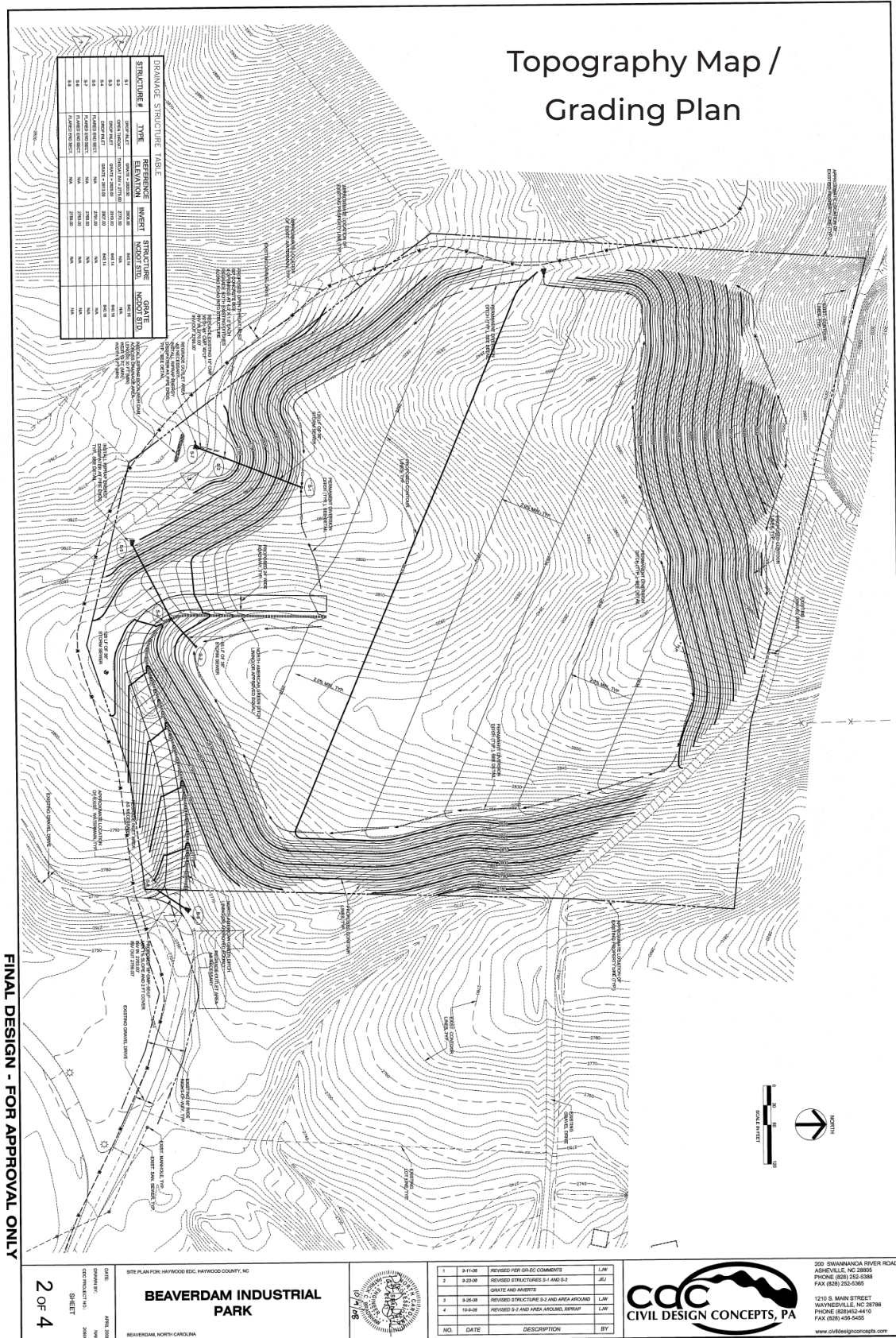
Fiber: Provider of choice – on site

Asking: \$125,000 / Acre (Appraisal and Geotechnical Study on File)



PLEASE CONTACT US

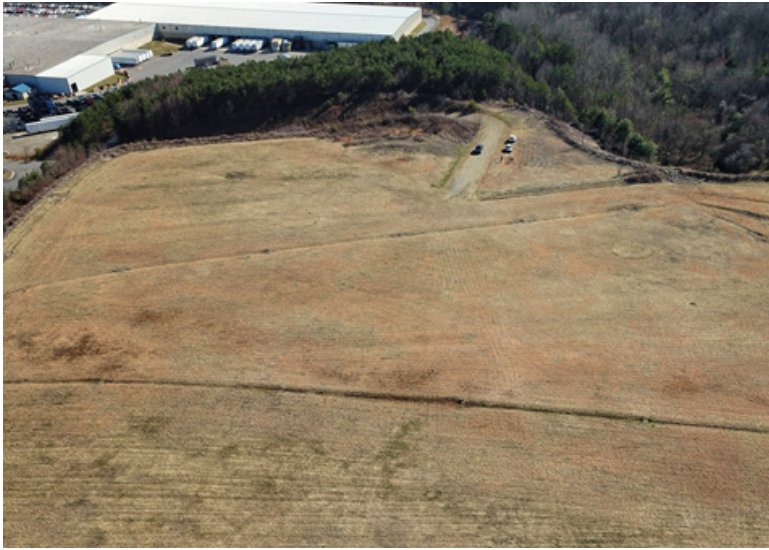
CLARK DUNCAN | Senior Vice President of Economic Development
828.258.6134, cduncan@ashevillechamber.org



PLEASE CONTACT US

CLARK DUNCAN | Senior Vice President of Economic Development
828.258.6134, cduncan@ashevillechamber.org

Aerial Photo Gallery



PLEASE CONTACT US

CLARK DUNCAN | Senior Vice President of Economic Development
828.258.6134, cduncan@ashevillechamber.org

Rendering Photo Gallery



PLEASE CONTACT US

CLARK DUNCAN | Senior Vice President of Economic Development
828.258.6134, cduncan@ashevillechamber.org